

A blurred street scene in a city, likely Paris, featuring a tram on the left and pedestrians walking on the sidewalk. The background shows multi-story buildings with balconies under a clear blue sky. The text is overlaid on the right side of the image.

For a  
**mobility**  
that changes  
the city.

transamo



*« By breathing new life into tram networks, developing bus rapid transit systems, and transforming cityscapes, we imagine a vast array of solutions to get a city moving. »*

## **IN ACTION BY YOUR SIDE** .....

TRANSAMO OFFERS A UNIQUE COMBINATION OF DIFFERENT FIELDS OF EXPERTISE:

- technical expertise in transport and mobility,
- legal, regulatory, and public procurement capability,
- consultancy support and project management expertise for complex projects in an urban environment.

TRANSAMO PROVIDES TOTAL COMMITMENT AND RESPONSIVENESS OF ITS TEAMS. WE BRING:

- dedicated teams, able to relocate regardless of the duration,
- technical, multidisciplinary, and managerial support from our specialised units based in Paris,
- the assistance of world renowned partners and innovators in the public transport domain (Transdev group, STIB, mixed-economy companies ...).



STUDIES  
CONSULTANCY AND ASSISTANCE  
IN PROJECT MANAGEMENT  
SPECIALISTS  
IN URBAN MOBILITY

## KEY DATA

A PART OF TRANSDEV, A GLOBAL LEADER IN PUBLIC TRANSPORT, AND A SUBSIDIARY OF THE STIB, THE OPERATOR OF THE PUBLIC TRANSPORT NETWORK OF BRUSSELS

STAFF OF 70

25 URBAN TRANSPORT PROJECTS DEVELOPED BY TRANSAMO SINCE 1994  
OVER 180 LOCAL AUTHORITIES AND PARTNERS HAVE ALREADY ENTRUSTED US WITH THEIR PROJECTS

## THE MEANING OF OUR WORK

Transamo possesses unique expertise totally dedicated to urban transport project management. We have a recognised competence in transport and urban infrastructure engineering, specialist project management tools and methods, and comprehensive legal and regulatory knowledge. Furthermore, our partnership with two internationally renowned public transport operators gives us unrivalled experience in the reality of operating public transport systems.

Our support of public authorities is always guided by three priorities: striving for excellence, our commitment to the public interest, and our unwavering respect for our professional code of ethics.

As technology and society have evolved we have diversified our range of services, to propose tailor-made solutions to the challenges that each local authority faces supported by all the tools needed to choose, control, and manage urban mobility more efficiently.

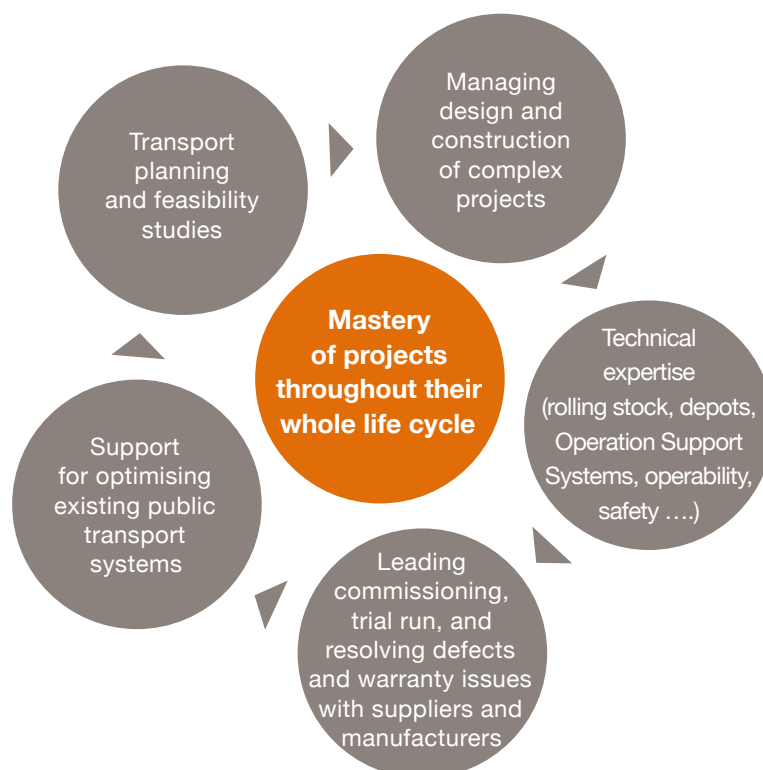
Thanks to our clients who have entrusted us with their projects, and to the commitment of our teams, we have worked for over 20 years to improve the liveability of cities by leading audacious and innovative mobility projects. Our upcoming challenges will no doubt be different, more complex, but even more exciting. One thing is certain : we will continue to meet those challenges, by your side.



## PEOPLE YOU CAN RELY ON

OUR TEAMS INCLUDE A WIDE RANGE OF TALENTED AND MULTIDISCIPLINARY PROFESSIONALS ENABLING US TO PROVIDE THE RIGHT CAPABILITY, WHEN YOU NEED IT, WHATEVER THE STAGE OF YOUR PROJECT:

- engineers and technical experts,
- project managers,
- town planners, architects,
- mobility economists,
- specialists in communication and public concertation of urban policies
- in-house lawyers and specialists in public procurement.





## REALITY CHECKS

.....

WHEN WE ARE INVOLVED FROM THE EARLIEST STAGES OF YOUR TRANSPORT PROJECT, WE ARE ABLE TO ASSURE ITS FEASIBILITY, SAFETY, OPERABILITY AND INTEGRATION, WHILST CONTINUALLY CONTROLLING COSTS.

Our unrivalled expertise and experience in urban transport projects has provided us with an in-depth understanding and feedback on systems already in operation. Our consultancy, our solutions, are all based on know-how gained in the field.



## **DESIGNING** TO MAKE YOUR PROJECTS COME TO LIFE : MOBILITY STUDIES

---

STUDIES CARRIED OUT BY TRANSAMO HELP PUBLIC TRANSPORT AUTHORITIES DETERMINE THE FEASIBILITY, DEFINE AND DESIGN THEIR PROJECTS.

The variety of transport project contexts and issues led us to create multidisciplinary teams composed of engineers, architects, town planners and economists, able to participate to projects in France and abroad, in every aspect of mobility studies:

- planning,
- data analysis,
- modelling,
- urban integration,
- operation,
- financial analysis,
- environmental analysis .

## **ELABORATING** TO ENSURE THE PROJECT FEASIBILITY AND OPERABILITY: TECHNICAL EXPERTISE

---

THE COMBINATION OF EXPERTISE IN BOTH OPERATIONS AND ENGINEERING MEANS THAT EACH PROJECT BENEFITS FROM A COMPREHENSIVE AND THOROUGH, TECHNICAL EVALUATION.

- modelling of tram and BRT operations using tried and proved operability and safety principals,
- expertise in rolling stock, systems and maintenance facilities,
- procurement of rolling stock and operational control and information systems on behalf of public transport authorities,
- support for commissioning and establishment of maintenance for BRT lines,
- review and development of optimal solutions for capacity and performance improvement on existing public transport systems,
- access to operational experience through Transdev's knowledge management systems for tramway maintenance, operation and safety.



## **MONITORING AND MANAGING TO PLAN AND DELIVER YOUR PROJECTS, ACHIEVING ALL YOUR OBJECTIVES: PROFESSIONAL PROJECT MANAGEMENT**

---

WORKING SIDE BY SIDE WITH THE PEOPLE INVOLVED IN THE PROJECT (PROJECT TEAMS, PUBLIC REPRESENTATIVES, OPERATORS, RESIDENTS AND CUSTOMERS), PROJECT MANAGEMENT CREATES COLLABORATION, MOMENTUM AND DIALOGUE.

Our teams guarantee the smooth running of the project and performance against project timelines and budgets, as specified by local authorities while integrating risk and other project constraints. Our consultants define and create both a structure and governance tools to:

- create an exhaustive list of all the tasks to be carried out, with the accountabilities, responsibilities, deadlines, dependencies and resource requirements defined,
- supply local authorities with permanent monitoring of all aspects of their projects (technical, regulatory, financial),,
- identify and assess risks to be able to mitigate the potential consequences,
- help local authorities make strategic decisions at the right time.

## **ENSURING A RISKPROOF PROJECT TO PREVENT RISKS: LEGAL AND REGULATORY EXPERTISE**

---

LEGAL PROJECT CONTROL IS ONE OF THE CONDITIONS INDISPENSABLE TO SUCCESS THROUGH IN-DEPTH ANALYSIS OF RISKS AND OPPORTUNITIES INHERENT IN EACH DECISION.

A team composed of public law experts, jurists and public procurement managers provides services in the following areas:

- procurement and execution of contracts on behalf of local authorities for project management mandates,
- consultancy on contractual delivery schemes, public contract practice and public-private partnerships,
- project governance procedures with respect to the environmental, town planning, public domain aspects and right of dispossession, which are critical parts of all projects,
- transport law and bodies governed by public law administering transport services.

**YOU HAVE A PROJECT ?  
LET'S TALK.**

.....  
21 RUE CAMILLE DESMOULINS  
CS70017  
92789 ISSY-LES-MOULINEAUX CEDEX 9  
FRANCE  
.....

TEL. +33 (0) 1 74 34 22 20  
.....

contact@transamo.com  
.....

**www.transamo.com**

**transamo**

BY YOUR SIDE

Conception : M. Robin - JF Gallard / &CO System - Crédits photos : Bertrand Jamot  
Franck Dunouau - Cyril Chigot - Florian Burger - Design architecture : Richez Associés  
& Bruno Remoué Associés - Imprimerie Valblor Illkirch